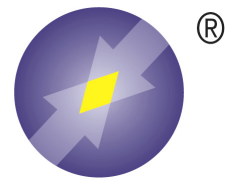


AbX™

Glutathione Mouse Monoclonal Antibody

Catalog Number A001-50UG



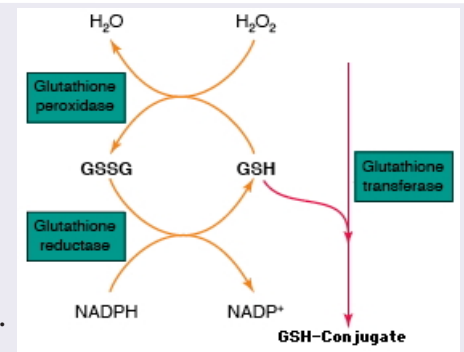
LUMINOS
INTERACTIVE ASSAY SOLUTIONS

FEATURES

- Applications include Western blotting, Immunoassay and Immunoprecipitation
- Supplied in PBS with no carrier protein
- For use under Non-Reducing conditions

INTRODUCTION

Glutathione (GSH) is the highest concentration non-protein thiol in mammalian cells and is present in concentrations of 0.5 to 10 mM. GSH plays a key role in many biological processes, including the synthesis of proteins and DNA, the transport of amino acids, and the protection of cells against oxidation. Harmful hydrogen peroxide cellular levels are minimized by the enzyme glutathione peroxidase (GP) using GSH as a reductant. The oxidized GSH dimer, GSSG, is formed from GSH and peroxide by the GP reaction. An important role of GSSG in the NFkB activating signal cascade is suggested by the fact that the potent NFkB inducer TPA increases intracellular GSSG levels and GSSG/GSH ratios.



The Luminos AbX™ Glutathione Mouse Monoclonal Antibody is produced as a Protein A purified antibody. It will measure GSH-protein complexes under non-reducing conditions.

CLONE NUMBER

L4H

IMMUNOGEN

Glutathione conjugated to Keyhole Limpet Hemocyanin

ANTIBODY SUBTYPE

Mouse IgG_{2a}

BUFFER COMPOSITION

Phosphate Buffered Saline at pH 7.2 containing 0.09% Sodium Azide

CONCENTRATION

100 µg/mL

STORAGE

Short Term: 4°C. Extended: Aliquot and freeze at -20°C

ANTIBODY USES

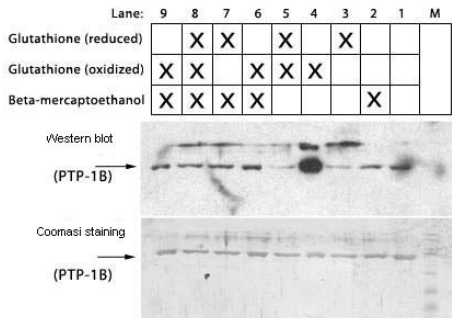
Western blotting, Immunoassay, and Immunoprecipitation

SUGGESTED DILUTION

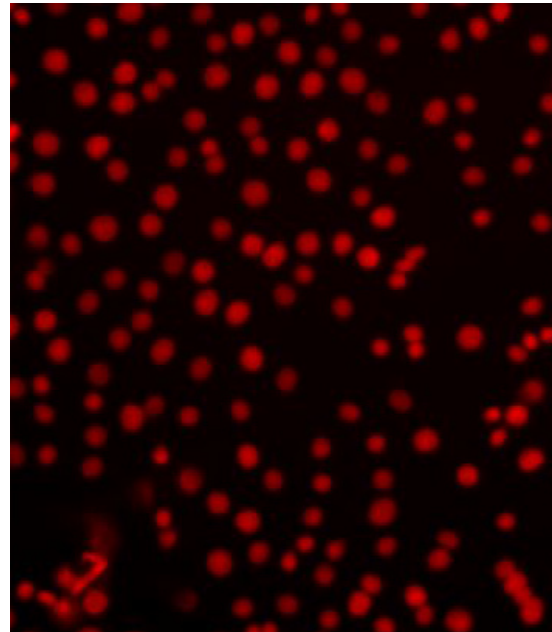
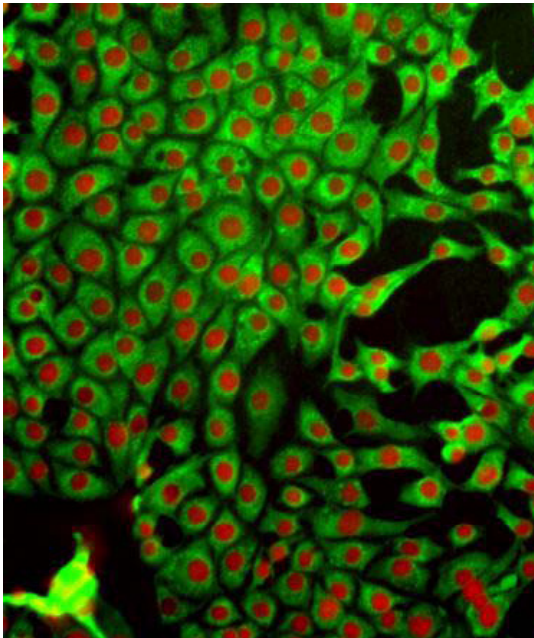
Western blotting, 1:1,000

WESTERN BLOTTING

Detection of protein-glutathione adducts on Western Blot under non-reducing conditions. PTP-1B refers to phosphotyrosine phosphatase 1B

**IMMUNOFLUORESCENCE**

HeLa cells incubated with Glutathione monoclonal, clone L4H, at a 1:100 dilution, counterstained with FITC-labeled goat anti-mouse IgG. Red nuclear stain is DAPI.

**RELATED PRODUCTS**

DetectX™ Glutathione Fluorescent Detection Kit Catalog Number Koo6-F1
 One sample measurement of GSH, GSSG and Total GSH
 Most sensitive, simple assay available