

Product Data Sheet

Cofilin 1, 1-166 aa

Human, His-tagged, Recombinant, *E.coli*

Cat. No.COF0751
Cat. No.COF0701

Size : 100 µg
Size : 0.5 mg

Synonyms : CFL1, CFL

NCBI Accession : NP_005498

Description: Cofilin is a family of actin-binding proteins which disassembles actin filaments. It is a widely distributed intracellular actin-modulating protein that binds and depolymerizes filamentous F-actin and inhibits the polymerization of monomeric G-actin in a pH-dependent manner. It is involved in the translocation of actin-cofilin complex from cytoplasm to nucleus. Recombinant human Cofilin, fused to His-tag at N-terminus, was expressed in *E.coli* and purified by using conventional chromatography techniques.

Form: 20mM Tris pH 8.0, 10% Glycerol

Molecular Weight: 20 kDa (186 aa)

Purity: ≥ 95% by SDS PAGE

Concentration : 1mg/ml

Sequences: MGSSHHHHH SSGLVPRGSH MASGVAVSDG VIKVFNDMKV RKSSTPEEVK KRKKAVLFCL
SEDKKNILE EGKEILVGDV GQTVDDPYAT FVKMLPKDC RYALYDATYE TKESKKEDLV
FIFWAPESAP LKSKMIYASS KDAIKKLTG IKHELQANCY EEVKDRCTLA EKLGGSAVIS
LEGKPL

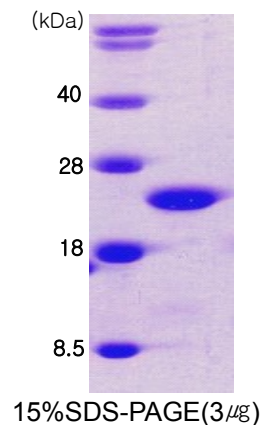
General references :

Mannherz H.G, *et al* , (2007). *J. Mol. Biol.* **366** (3) 745-755.

Olsen J.V., *et al* , (2006). *Cell.* **127** (3), 635-648

Yang N. *et al* , (1998) *Nature* **393** (6687), 809-812

Storage : Store at -20°C. Avoid freeze/thaw cycles



WARNING: THIS PRODUCT IS NOT INTENDED OR APPROVED FOR HUMAN, DIAGNOSTICS OR VETERINARY USE. USE OF THIS PRODUCT FOR HUMAN OR ANIMAL TESTING IS EXTREMELY HAZARDOUS AND MAY RESULT IN DISEASE, SEVERE INJURY, OR DEATH.