

# Product Insert

# EasyLadder I

Research Use Only

## DESCRIPTION

EasyLadder I is a ready-to-use DNA molecular weight marker, specially designed for DNA analysis in standard and high-throughput agarose gels. The Ladder is pre-mixed with red loading buffer.

## SIZING

EasyLadder I contains 5 even-intensity bands ranging from 100 bp to 2 kb for easy identification of the DNA samples analysed. EasyLadder I is an ideal DNA molecular weight marker, specially designed for short-runs (1 to 3 cm) in standard and high-throughput agarose gels.

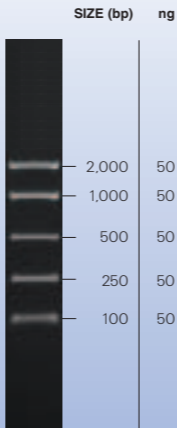
## QUANTIFICATION

When using the standard loading of 5  $\mu$ l per lane (250 ng of DNA), each band corresponds to a precise quantity of 50 ng (see illustration on rear), which enables the user to determine the relative concentration of the DNA sample to be analysed as well as its molecular weight.

PRODUCT	PACK SIZE	CATALOGUE NUMBER	PRESENTATION
EasyLadder I	200 lanes	BIO-33045	2 x 500 $\mu$ l
EasyLadder I	500 lanes	BIO-33046	5 x 500 $\mu$ l

# Product Insert

## EasyLadder I



5 $\mu$ l of EasyLadder I / lane,  
2% molecular-biology grade agarose.

## **STORAGE CONDITIONS**

EasyLadder I should be stored at -20°C until first use. Thereafter, the product can be stored at 4°C for up to 6 months.

Avoid multiple freeze thaw cycles, as these can damage the product.

## **SHIPPING CONDITIONS**

Suitable for shipping at room temperature.

## **PRODUCT LIFE**

One year from the date of purchase.

## **TROUBLE SHOOTING**

Ladders not sinking - vortex briefly.

## **5x LOADING BUFFER**

A Red 5x sample loading buffer is supplied for your convenience. Under no circumstances should it be used to dilute/ load ladder.

