

Product Insert

EasyLadder II

Research Use Only

DESCRIPTION

EasyLadder II is a ready-to-use DNA molecular weight marker, specially designed for DNA analysis in standard and high-throughput agarose gels. The Ladder is pre-mixed with red loading buffer.

SIZING

EasyLadder II contains 5 even-intensity bands ranging from 0.5 to 5 kb for easy identification of the DNA samples analysed. EasyLadder II is an ideal DNA molecular weight marker, specially designed for short-runs (1 to 3 cm) in standard and high-throughput agarose gels.

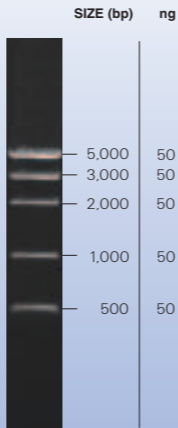
QUANTIFICATION

When using the standard loading of 5 μ l per lane (250 ng of DNA), each band corresponds to a precise quantity of 50 ng (see illustration on rear), which enables the user to determine the relative concentration of the DNA sample to be analysed as well as its molecular weight.

PRODUCT	PACK SIZE	CATALOGUE NUMBER	PRESENTATION
EasyLadder II	200 lanes	BIO-33047	2 x 500 μ l
EasyLadder II	500 lanes	BIO-33048	5 x 500 μ l

Product Insert

EasyLadder II



5 μ l of EasyLadder II / lane,
1.5% molecular-biology grade agarose.

STORAGE CONDITIONS

EasyLadder II should be stored at -20°C until first use. Thereafter, the product can be stored at 4°C for up to 6 months.

Avoid multiple freeze thaw cycles, as these can damage the product.

SHIPPING CONDITIONS

Suitable for shipping at room temperature.

PRODUCT LIFE

One year from the date of purchase.

TROUBLE SHOOTING

Ladders not sinking - vortex briefly.

5x LOADING BUFFER

A Red 5x sample loading buffer is supplied for your convenience. Under no circumstances should it be used to dilute/ load ladder.

