

# Bcl-2 Monoclonal Antibody

|                            |                   |
|----------------------------|-------------------|
| <b>CATALOG #:</b>          | 3003-100          |
| <b>LOT #:</b>              | _____             |
| <b>HOST:</b>               | Mouse             |
| <b>ISOTYPE:</b>            | IgG <sub>1</sub>  |
| <b>CLONE:</b>              | 7T                |
| <b>MOL. WEIGHT:</b>        | 26 KDa            |
| <b>IMMUNOGEN:</b>          | Human Bcl-2       |
| <b>SPECIES REACTIVITY:</b> | Human, Mouse, Rat |

## ANTIBODY FORMULATION:

100 µg (200 µg/ml) in PBS containing 1 mg/ml BSA and 1.5 mM sodium azide and 50% glycerol.

## STORAGE CONDITIONS:

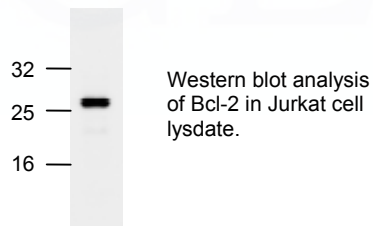
Store at -20°C. For long term storage, aliquot and refreeze at -70°C. Avoid repeated freeze/thaw cycles.

## DESCRIPTION:

Human hematopoietic malignancies are often characterized by gene rearrangements that deregulate gene expression. The Bcl-2 (B-cell leukemia/lymphoma 2) gene was discovered by walking the chromosomal breakpoints t(14;18). This gene consists of two exons and several transcripts that encode two different protein products, Bcl-2 $\alpha$  and Bcl-2 $\beta$ . Both proteins are approximately 26-30 kDa and differ at their C-terminal region. Bcl-2 suppresses apoptosis and this property appears to be modulated by homodimerization or association with Bax and Bad, two cell death promoters.

## APPLICATIONS AND USAGE:

The antibody can be used for Western blot (1-4 µg/ml), immunoprecipitation (10-20 µg/ml), Immunofluorescence (10-20 µg/ml), and Immunohistochemistry (10-20 µg/ml). However the optimal conditions should be determined individually.



## RELATED PRODUCTS:

### Apoptosis Detection Kits & Reagents

- Annexin V Kits & Bulk Reagents
- Caspase Assay Kits & Reagents
- Mitochondrial Apoptosis Kits & Reagents
- Nuclear Apoptosis Kits & Reagents
- Apoptosis Inducers and Set
- Apoptotic Cell Isolation Kit

### Cell Fractionation System

- Mitochondria/Cytosol Fractionation Kit
- Nuclear/Cytosol Fractionation Kit
- Membrane Protein Extraction Kit
- Cytosol/Particulate Rapid Separation Kit
- Mammalian Cell Extraction Kit
- FractionPREP Fractionation System

### Cell Proliferation & Senescence

- Quick Cell Proliferation Assay Kit
- Senescence Detection Kit
- High Throughput Apoptosis/Cell Viability Assay Kits
- LDH-Cytotoxicity Assay Kit
- Bioluminescence Cytotoxicity Assay Kit
- Live/Dead Cell Staining Kit

### Cell Damage & Repair

- HDAC Fluorometric & Colorimetric Assays & Drug Discovery Kits
- HAT Colorimetric Assay Kit & Reagents
- DNA Damage Quantification Kit
- Glutathione & Nitric Oxide Fluorometric & Colorimetric Assay Kits

### Signal Transduction

- cAMP & cGMP Assay Kits
- Akt & JNK Activity Assay Kits
- Beta-Secretase Activity Assay Kit

### Adipocyte & Lipid Transfer

- Recombinant Adiponectin, Survivin, & Leptin
- CETP Activity Assay & Drug Discovery Kits
- PLTP Activity Assay Kit
- Total Cholesterol Quantification Kit

### Molecular Biology & Reporter Assays

- siRNA Vectors
- Cloning Insert Quick Screening Kit
- Mitochondrial & Genomic DNA Isolation Kits
- 5 Minutes DNA Ligation Kit
- 20 Minutes Gel Staining/Destaining Kit
- $\beta$ -Galactosidase Staining Kit & Luciferase Reporter Assay Kit

### Growth Factors and Cytokines

Quality Antibodies for Apoptosis and Signal Transduction Molecules