

Bcl-2 Polyclonal Antibody

CATALOG #:	3033-100
AMOUNT:	100 µg
LOT #:	_____
HOST:	Rabbit
IMMUNOGEN:	Synthetic peptide corresponding to the N-terminus of human Bcl-2.

FORMULATION:

100 µg (0.2 mg/ml) affinity-purified rabbit anti-Bcl-2 polyclonal antibody in phosphate buffered saline (PBS), pH 7.2, containing 50% glycerol, 1% BSA, 0.02% sodium azide.

SPECIES REACTIVITY: human, mouse, rat

STORAGE CONDITIONS:

Store at -20°C. For long-term storage, aliquot and freeze at -70°C. Avoid repeated freeze/thaw cycles.

BACKGROUND DESCRIPTION:

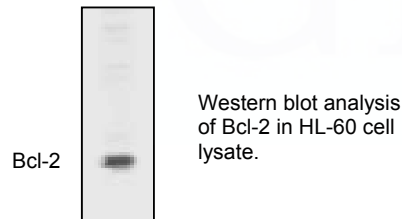
Bcl-2 and its homologs belong to a family of proteins that either promotes or prevent apoptosis. Bcl-2 alpha and beta are the alternatively spliced isoforms of 25 kDa and 22 kDa mitochondrial integral membrane proteins that inhibit apoptosis. Bcl-2 was identified as a gene translocated from chromosome 18 to the immunoglobulin (Ig) heavy chain locus on chromosome 14 in B lymphocytes, a condition that is associated with the onset of human follicular B cell lymphomas. This interchromosomal translocation leads to constitutive expression of Bcl-2, which results in increased survival and expansion of follicular center cell population.

SPECIFICITY:

Detects a 25 kDa protein, corresponding to the apparent molecular weight of the α isoform of Bcl-2 on SDS-PAGE immunoblots.

APPLICATION AND USAGE:

Western blot analysis (0.5-2 µg/ml), Immunoprecipitation (4-8 µg/ml), and Immunohistochemistry (10-20 µg/ml). However, the optimal conditions should be determined individually.



RELATED PRODUCTS:

Apoptosis Detection Kits & Reagents

- Annexin V Kits & Bulk Reagents
- Caspase Assay Kits & Reagents
- Mitochondrial Apoptosis Kits & Reagents
- Nuclear Apoptosis Kits & Reagents
- Apoptosis Inducers and Set
- Apoptosis siRNA Vectors

Cell Fractionation System

- Mitochondria/Cytosol Fractionation Kit
- Nuclear/Cytosol Fractionation Kit
- Membrane Protein Extraction Kit
- Cytosol/Particulate Rapid Separation Kit
- Mammalian Cell Extraction Kit
- FractionPREP Fractionation System

Cell Proliferation & Senescence

- Quick Cell Proliferation Assay Kit
- Senescence Detection Kit
- High Throughput Apoptosis/Cell Viability Assay Kits
- LDH-Cytotoxicity Assay Kit
- Bioluminescence Cytotoxicity Assay Kit
- Live/Dead Cell Staining Kit

Cell Damage & Repair

- HDAC Fluorometric & Colorimetric Assays & Drug Discovery Kits
- HAT Colorimetric Assay Kit & Reagents
- DNA Damage Quantification Kit
- Glutathione & Nitric Oxide Fluorometric & Colorimetric Assay Kits

Signal Transduction

- cAMP & cGMP Assay Kits
- Akt & JNK Activity Assay Kits
- Beta-Secretase Activity Assay Kit

Adipocyte & Lipid Transfer

- Recombinant Adiponectin, Survivin, & Leptin
- CETP Activity Assay & Drug Discovery Kits
- PLTP Activity Assay & Drug Discovery Kits
- Total Cholesterol Quantification Kit

Molecular Biology & Reporter Assays

- siRNA Vectors
- Cloning Insert Quick Screening Kit
- Mitochondrial & Genomic DNA Isolation Kits
- 5 Minutes DNA Ligation Kit
- 20 Minutes Gel Staining/Destaining Kit
- β -Galactosidase Staining Kit & Luciferase Reporter Assay Kit

Growth Factors and Cytokines

Monoclonal and Polyclonal Antibodies