

# Mcl-1 Polyclonal Antibody

<b>CATALOG #:</b>	3035-100
<b>AMOUNT:</b>	100 µg
<b>LOT #:</b>	_____
<b>HOST:</b>	Rabbit
<b>IMMUNOGEN:</b>	Synthetic peptide corresponding to residues surrounding amino acid 124 of human Mcl-1

## FORMULATION:

100 µg (0.2 mg/ml) immunoaffinity purified rabbit anti-Mcl-1 polyclonal antibody in phosphate buffered saline (PBS), pH 7.2, containing 50% glycerol, 1% BSA, and 0.02% thimerosal.

**SPECIES REACTIVITY:** human, mouse, rat, monkey, rabbit, porcine, canine

## STORAGE CONDITIONS:

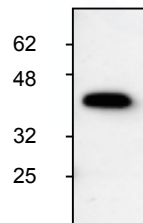
Store at -20°C. For long term storage, aliquot and freeze at -70°C. Avoid repeated freeze/thaw cycles.

## BACKGROUND DESCRIPTION:

Mcl-1 (Myeloid cell leukemia-1) is a 37 kDa Bcl-2-related protein with an apparent molecular weight of 43 kDa on SDS-PAGE. Mcl-1 was identified as an early-induction gene that increased in expression during the differentiation of human myeloblastic leukemia cell ML-1, or exposure to different DNA damaging agents. The level of Mcl-1 is decreased in peripheral B lymphocytes undergoing apoptosis following treatment with apoptotic stimuli such as TGF-β1 and forskolin. Expression of Mcl-1 is able to delay apoptosis induced by over-expression of c-myc in CHO 5AHSmyc cells. In hematopoietic FDC-P1 cells, Mcl-1 interacts with another Bcl-2-related protein, Bax, and prolongs cell viability after treatment with different apoptotic reagents.

## APPLICATION AND USAGE:

The antibody can be used for Western blot analysis (1-2 µg/ml), immunoprecipitation (10-25 µg/ml), and immunohistochemistry (10-20 µg/ml). However, the optimal conditions should be determined individually.



Western blot analysis of Mcl-1 in Ramos cell lysate.

## RELATED PRODUCTS:

### Apoptosis Detection Kits & Reagents

- Annexin V Kits & Bulk Reagents
- Caspase Assay Kits & Reagents
- Mitochondrial Apoptosis Kits & Reagents
- Nuclear Apoptosis Kits & Reagents
- Apoptosis Inducers and Set
- Apoptosis siRNA Vectors

### Cell Fractionation System

- Mitochondria/Cytosol Fractionation Kit
- Nuclear/Cytosol Fractionation Kit
- Membrane Protein Extraction Kit
- Cytosol/Particulate Rapid Separation Kit
- Mammalian Cell Extraction Kit
- FractionPREP Fractionation System

### Cell Proliferation & Senescence

- Quick Cell Proliferation Assay Kit
- Senescence Detection Kit
- High Throughput Apoptosis/Cell Viability Assay Kits
- LDH-Cytotoxicity Assay Kit
- Bioluminescence Cytotoxicity Assay Kit
- Live/Dead Cell Staining Kit

### Cell Damage & Repair

- HDAC Fluorometric & Colorimetric Assays & Drug Discovery Kits
- HAT Colorimetric Assay Kit & Reagents
- DNA Damage Quantification Kit
- Glutathione & Nitric Oxide Fluorometric & Colorimetric Assay Kits

### Signal Transduction

- cAMP & cGMP Assay Kits
- Akt & JNK Activity Assay Kits
- Beta-Secretase Activity Assay Kit

### Adipocyte & Lipid Transfer

- Recombinant Adiponectin, Survivin, & Leptin
- CETP Activity Assay & Drug Discovery Kits
- PLTP Activity Assay & Drug Discovery Kits
- Total Cholesterol Quantification Kit

### Molecular Biology & Reporter Assays

- siRNA Vectors
- Cloning Insert Quick Screening Kit
- Mitochondrial & Genomic DNA Isolation Kits
- 5 Minutes DNA Ligation Kit
- 20 Minutes Gel Staining/Destaining Kit
- β-Galactosidase Staining Kit & Luciferase Reporter Assay Kit

### Growth Factors and Cytokines

### Monoclonal and Polyclonal Antibodies