

Monoclonal anti-human Visfatin antibody (clone 4D5)

Mouse IgG₁, κ

Cat. No. AVI0816

Cat. No. AVI0856

Size : 100 μl

Size : 50 μl

Immunogen: Recombinant human Visfatin (1-491 aa) purified from *E. coli*

Isotype: Mouse IgG₁ heavy chain and κ light chain

Clone: Anti-human Visfatin mAb, clone 4D5, is derived from hybridization of mouse FO myeloma cells with spleen cells from BALB/c mice immunized with a recombinant human Visfatin protein.

Description: Visfatin is pre-B cell colony-enhancing factor 1(PBEF), which is predominantly secreted from visceral adipose tissue both in humans and mice. This protein has also been reported to be a cytokine (PBEF) that promotes B cell maturation and inhibits neutrophil apoptosis, or a visceral-fat derived hormone that acts by binding and activating the insulin receptor.

Concentration: 1 mg/ml

Form: Liquid in Phosphate-Buffered Saline (pH 7.4) with 0.1% Sodium Azide

Preparation and Storage: The antibody was purified from mouse ascitic fluids by protein-G affinity chromatography. Can be stored at 4°C for up to one month, but store at -20°C for long term storage. Avoid repeated freezing and thawing cycles.

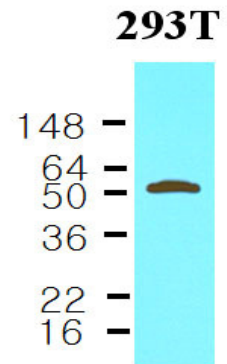
Usage: The antibody has been tested by ELISA and Western blot analysis to assure specificity and reactivity. Since application varies, however, each investigation should be titrated by the reagent to obtain optimal results. Recommended dilution range for Western blot analysis is 1:1000 ~ 1:3,000. Recommended starting dilution is 1:1000.

Application: ELISA, WB

WARNING: THIS PRODUCT IS NOT INTENDED OR APPROVED FOR HUMAN, DIAGNOSTICS OR VETERINARY USE. USE OF THIS PRODUCT FOR HUMAN OR ANIMAL TESTING IS EXTREMELY HAZARDOUS AND MAY RESULT IN DISEASE, SEVERE INJURY, OR DEATH.

Western blot analysis

Cell lysates of 293T (30ug) were resolved by SDS-PAGE, transferred to NC membrane and probed with anti-human Visfatin (1:1000). Proteins were visualized using a goat anti-mouse secondary antibody conjugated to HRP and an ECL detection system.



General references : Stephens JM, *et al.*, (2006) *Curr Opin Lipidol.* 17:128-31

Hug C, *et al.*, (2005) *Science.* 307:36-97

WARNING: THIS PRODUCT IS NOT INTENDED OR APPROVED FOR HUMAN, DIAGNOSTICS OR VETERINARY USE. USE OF THIS PRODUCT FOR HUMAN OR ANIMAL TESTING IS EXTREMELY HAZARDOUS AND MAY RESULT IN DISEASE, SEVERE INJURY, OR DEATH.