



**The LABTOP®** Micro controller based platelet incubators are designed to store Platelet concentrates in continuous motion at controlled temperature. The platelet incubators are constructed of double walls. The exterior is made of mild steel (1mm thick) powder coated and the inner chamber is fabricated of stainless steel (0.8mm thick, 304).

We offer you the widest collection of platelet incubators available, from compact unit for small institutions to large floor models that offer maximum capacity and reliability.

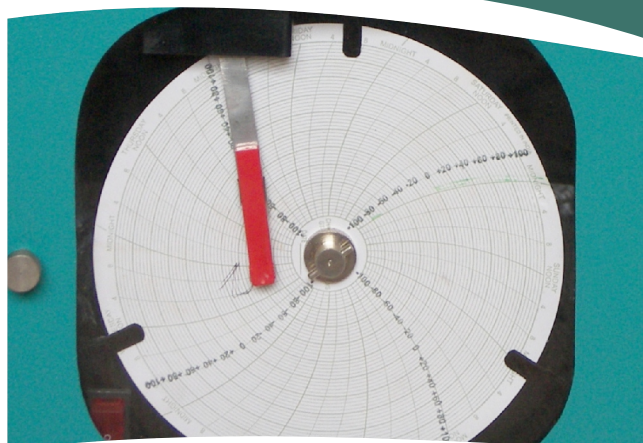
Labtop Platelet Incubators provide accurate and stable storage conditions at 22°C. This compact model takes very little space and will accurately incubate platelet bags when used with the Labtop agitator. Labtop has incorporated motion failure alarm (Optional) and recording functions that are found in the Labtop Blood Bank range providing the same levels of product security. An independent 7 day circular chart recorder provides operating temperature evidence.

**Calibration:**

The equipment is calibrated with the help of master calibrator, which is certified for its accuracy by Electronics Regional Testing Laboratory (ERTL West) Government of India recognized testing laboratory with traceable reference to National Physical Laboratories (NPL).

## PLATELET INCUBATOR

# PLATELET INCUBATOR



## Special Features

- ✓ Micro-controller Controls the internal temperature within  $\pm 0.5^{\circ}\text{C}$ .
- ✓ Unique air flow system ensures even temperature distribution.
- ✓ Formed in place CFC free PUF insulation ensures temperature stability and reduced energy consumption.
- ✓ Audio visual alarm for temperature deviation from the set temperature.
- ✓ Motion failure alarm when the agitator fails to operate.
- ✓ Automatic agitator stops when door is open.

The Labtop Platelet Agitator features the unique design Labtop rack with high ventilation capability to allow oxygen transfer to the platelets. Smooth sliding stainless steel trays which can be removed for cleaning as well as enable easy removal or loading of bags in the tray. Fixed speed agitator with heavy duty bearings and quiet operation. When used with a labtop Platelet Incubator the agitator will automatically stop when the door is open.

## Technical Specification:-

Catalogue No	LPI-125	LPI-250	LPI-500
Volume	125 Ltrs	250 Ltrs	500 Ltrs
Temperature	22.0 $^{\circ}\text{C}$	22.0 $^{\circ}\text{C}$	22.0 $^{\circ}\text{C}$
Accuracy	$\pm 0.5^{\circ}\text{C}$	$\pm 0.5^{\circ}\text{C}$	$\pm 0.5^{\circ}\text{C}$
Input Voltage	230 V AC	230 V AC	230 V AC
No. of Agitator (Optional)	One	Two	Four
Temperature Control	Micro Controller	Micro Controller	Micro Controller
Temperature Recorder	7 Days circular chart	7 Days circular chart	7 Days circular chart

## Technical Specification of Agitator:-

Catalogue No	LPA-24	LPA-36	LPA-46
No. of Platelet Bags	24	36	48
No. of tray	4	6	8
Alarm (Optional)	Audio Visual	Audio Visual	Audio Visual

**SKYLAB INSTRUMENTS & ENGINEERING PVT. LTD.**

M-7 & 8, Anand Mangal Ind. Estate, Survey No.: 70-B,  
Opp. IPOL, Waliv Phata, Sativali Road,  
Vasai (E), Dist - Thane-401 208, Maharashtra, INDIA.  
Tel.: 91-250-2481431, 2481428 Fax : 91-250-2481505  
e-mail : byjuskylab@vsnl.net www.skylabinstrument.com