



## Cultrex® 3-D Culture Cell Harvesting Kit

### Trevigen releases the first standardized 3-D Culture Cell Harvesting Kit

Many scientists are converting from growing cells in a traditional 2-D monolayer on plastic surfaces with tissue culture medium to "3-D" Culture. In 3-D Culture, cells are grown in a microenvironment of specialized proteins which mimics in vivo conditions and allows the cells to organize into complex structures rather than uniform monolayers. Further, 3-D Cultures are grown on extracellular matrix proteins such as basement membrane extract and laminin I, which are known to play a role in modulating cellular response to pharmacological compounds. Until now, methods to remove cells from these 3-D models have either been inefficient or resulted in the degradation of extracellular receptors which adversely affects biochemical analysis.

Trevigen solves these problems with the release of the the first standardized kit for isolating cells from 3-D Culture for biochemical analysis. The Cultrex® 3-D Culture Cell Haversting Kit is based on a non-enzymatic approach which prevents biochemical degradation during processing and overcomes the problems associated with extracting cells from BME or Laminin I in 3-D Culture. The quality of the harvested cells is ideal for western blotting, RNA and DNA analysis.

Trevigen, Inc. is a rapidly growing biotechnology company focused on the development of products and technology for cancer research, emphasizing apoptosis, DNA damage and repair, and cancer cell function and behavior. Trevigen has been a long-standing provider of quality reagents and kits for researchers investigating programmed cell death and DNA damage and repair. A logical extension of the focus on cancer research has been the recent development of assays for cancer cell function and behavior including angiogenesis, cell invasion and tumor formation. Currently, the product portfolio contains over 500 products categorized into four processes – Apoptosis, DNA Damage and Repair, Angiogenesis, and Oxidative Stress.

3-D qualified BME, Laminin I and Collagen I, as well as 3-D cell proliferation kits are also available separately from Trevigen. Visit [www.trevigen.com](http://www.trevigen.com) or contact us at 1800-873-8443 or [info@trevigen.com](mailto:info@trevigen.com) for more information.

Figure 1

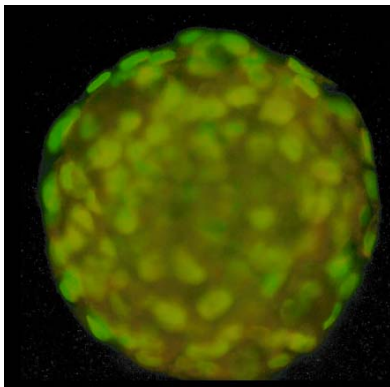


Figure 1: MCF-10A cells in 3-D Culture Matrix™ stained with SYBR® Green

### Trevigen, Inc.

8405 Helgerman Court, Gaithersburg, MD 20877 USA

Voice: 1-800-TREVIGEN (1-800-873-8443) • 301-216-2800 • Fax: 301-560-4973

Email: [info@trevigen.com](mailto:info@trevigen.com) • <http://www.trevigen.com>