

## Monoclonal anti-human PDCD4 antibody (clone k4C1 )

**Mouse IgG<sub>1</sub>, κ**

**Cat. No. APD0818**

**Cat. No. APD0858**

**Size : 100 μl**

**Size : 50 μl**

**Immunogen:** Recombinant human PDCD4 (1-469aa) purified from *E. coli*

**Isotype:** Mouse IgG<sub>1</sub> heavy chain and κ light chain

**Clone:** Anti-human PDCD4 mAb, clone k4C1, is derived from hybridization of mouse FO myeloma cells with spleen cells from BALB/c mice immunized with a recombinant human PDCD4 protein.

**Description:** Programmed cell death 4 (PDCD4) encodes a tumor suppressor protein whose expression is lost in progressed carcinomas of lung, breast, colon, and prostate. The expression of PDCD4 gene is strongly induced during apoptosis in a number of cell types. It is modulated by cytokines in natural killer and T cells.

**Concentration:** 1 mg/ml

**Form:** Liquid. In Phosphate-Buffered Saline (pH 7.4) with 0.1% Sodium Azide

**Preparation and Storage:** The antibody was purified from mouse ascitic fluids by protein-G affinity chromatography. Can be stored at 4°C for up to one month, but store at -20°C for long term storage. Avoid repeated freezing and thawing cycles.

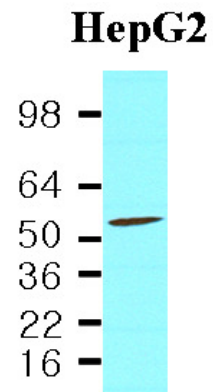
**Usage:** The antibody has been tested by ELISA and Western blot analysis to assure specificity and reactivity. Since application varies, however, each investigation should be titrated by the reagent to obtain optimal results. Recommended dilution range for Western blot analysis is 1:1,000 ~ 1:3,000. Recommended starting dilution is 1:2,000.

**Application:** ELISA, WB

**WARNING: THIS PRODUCT IS NOT INTENDED OR APPROVED FOR HUMAN, DIAGNOSTICS OR VETERINARY USE. USE OF THIS PRODUCT FOR HUMAN OR ANIMAL TESTING IS EXTREMELY HAZARDOUS AND MAY RESULT IN DISEASE, SEVERE INJURY, OR DEATH.**

**Western blot analysis**

Cell lysates of HepG2(40ug) were resolved by SDS-PAGE, transferred to NC membrane and probed with anti-human PDCD4 (1:2,000). Proteins were visualized using a goat anti-mouse secondary antibody conjugated to HRP and an ECL detection system.



**General references** : Palamarchuk A, *et al.*, (2006) *Cancer Res* 65(24):11282-11286  
Yoshina, *et al.*, (1999) *Pathol Int* 49(12):1067-1077

**WARNING: THIS PRODUCT IS NOT INTENDED OR APPROVED FOR HUMAN, DIAGNOSTICS OR VETERINARY USE. USE OF THIS PRODUCT FOR HUMAN OR ANIMAL TESTING IS EXTREMELY HAZARDOUS AND MAY RESULT IN DISEASE, SEVERE INJURY, OR DEATH.**