

Be gentle on your cells



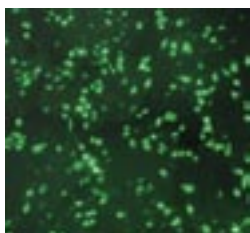
PlasFect™

NEW

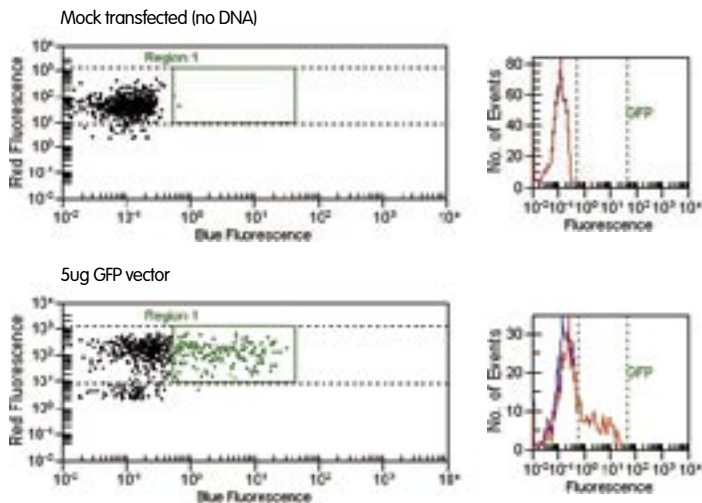
- **Fast and easy transfection**
- **High transfection efficiency for high protein expression levels**
- **Very low cytotoxicity especially useful for sensitive cells such as HeLa**
- **High reproducibility**

Gene delivery to eukaryotic cells is the fundamental technique for studying the regulation of gene expression and protein function. PlasFect™ is a lipid-based transfection reagent that provides highly efficient delivery of plasmid DNA into eukaryotic cells for both stable and transient gene expression. The use of PlasFect requires minimal optimization in your assays.

PlasFect is simple to use and is able to transfect a variety of commonly used mammalian cell lines including HeLa, NIH3T3, CHOK1, HEK293, MCF7, COS-1 and 3T6. PlasFect features extremely low toxicity to the cells and provides excellent performance for transfections in both serum containing and serum free media.



Photograph of GFP-transfected CHOK1 cells obtained with a fluorescence microscope.



GFP vector was transiently transfected into CHOK1 cells at a 1:4 ratio of DNA:PlasFect reagent. Transfection efficiency was determined by flow cytometry on an Agilent 2100 Bioanalyzer and shown in dot plots and histograms. The GFP-expressing cell population (34.8%) is highlighted in green.

PlasFect™			
DESCRIPTION	PACK SIZE	CAT NO.	PRICE
PlasFect™	750µl	BIO-46025	n.a
PlasFect™	1.5ml	BIO-46026	n.a
PlasFect™	5 x 1.5ml	BIO-46027	n.a

